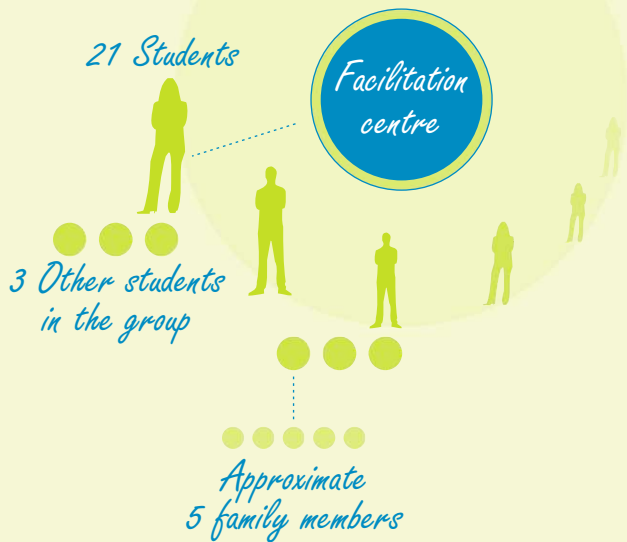


*How many people are impacted?*

- ✓ **21 directly impacted**
- ✓ **21 + 63 indirectly impacted and prepared for the next phase**
- ✓ **84 x 5 are exposed to program**



*Take charge of your life.  
You only have one...*

**3 in 1 deal**

**Qualify for BBBEE Scorecards**

**...Integrate**

- ✓ Code 400 (Skills Development)
- ✓ Code 600 (Enterprise development) and
- ✓ Code 700 (Social Development)

**...by making one choice**

**1 STOP Solution in a 5 year sustainable program**

**It requires ONE decision and contribution to ONE project**

**This decision cultivates a legacy for sustainability**

CONTACT DETAILS: Touching Africa Development Trust  
Des Muller: +27 82 528 0538, Ike de Wet: +27 83 257 1876  
76 Steve Biko Ave, Potchefstroom, 2520,  
PO Box 19460, Noordbrug 2522, E-mail: info@touching-africa.com



*Find your passion and excel!!*

**Earn while you learn!**

**Learn while you earn!**

Reasons for failure in the work and study place are:

- » Incorrect choice of industry, career, job and work
- » Insufficient support at home and community
- » Unorganised / poor time management
- » Insufficient communication and group skills (Core proficiencies)



X<sup>2</sup>O proposes a strategy with the following outcomes:

- ✓ Work ready or study ready
- ✓ Competencies to work in groups
- ✓ Family and wider support
- ✓ A comprehensive Electronic Portfolio of Evidence (EPoE)

**Become a high performance worker who is self driven**

Change attitudes from **Job Seeker to Career Maker. How?!**

Enhance the basic traits to succeed in studies and work through:

- ✓ Willingness to learn
- ✓ Develop life skills
- ✓ Communication skills
- ✓ Enthusiasm for the chosen industry, career, job and work.

**“The exposure to opportunities let candidates master competencies to achieve access to the study and work place.”**



## Phase 1

*P.I.B. SPEEX Test for readiness*

- ✓ Exposure to opportunity
- ✓ Desired industry
- ✓ Discover your passion
- ✓ Skills and qualification needed
- ✓ Develop and implement your plan
- ✓ Engage family
- ✓ Work in groups
- ✓ Electronic Portfolio of Evidence (EPoE)

*P.I.B. SPEEX Test for readiness*

## Phase 2

- ✓ Internet tools and Processes
- ✓ Communication skills
- ✓ Life skills
- ✓ Numeracy skills
- ✓ Business jargon
- ✓ Functional English literacy
- ✓ Personal Profiles
- ✓ Group processes
- ✓ Personal CV
- ✓ EPoE

*P.I.B. SPEEX Test for readiness*

## Phase 3

- ✓ Apply core competencies
- ✓ Work in groups and recruit new candidates
- ✓ Participate online
- ✓ Sell career maker (Business simulation)
- ✓ EPoE
- ✓ Personal Development Plan (PDP)
- ✓ Career and entrepreneurial skills (NWU short course)

*P.I.B. SPEEX Test for work readiness*

*NWU Certificate (NQF6)*

